

**Resona Series**  
Premium Ultrasound System

**New Waves in Ultrasound  
Innovation**

*Zone Intelligence for Women's Health*

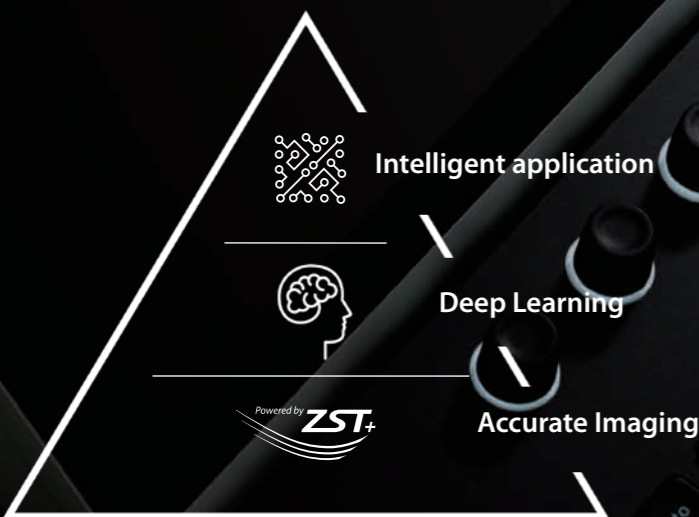


# New Waves in Ultrasound Innovation

## Further Enhanced by Zone Intelligence

Since the company was founded, Mindray is continuously exploring new ways to improve diagnostic confidence. Powered by the most revolutionary ZONE Sonography® Technology, the ZST+ platform brings ultrasound image quality to a higher level by zone acquisition and channel data processing.

Thanks to the innovative, software-driven ZST+ platform, the Resona series is continuously evolving with the leading-edge technologies to meet the most challenging diagnostic demands in women's health practice. More importantly, it is designed with the understanding that the wisdom of experts is always precious, and you need more intelligent partner for enhanced speed and confidence. Finally, Resona series with Zone Intelligence provides a total solution to help you with diagnostic confidence, efficiency, and standardization across different diagnostic challenges in today's demanding and overburden hospital environment.

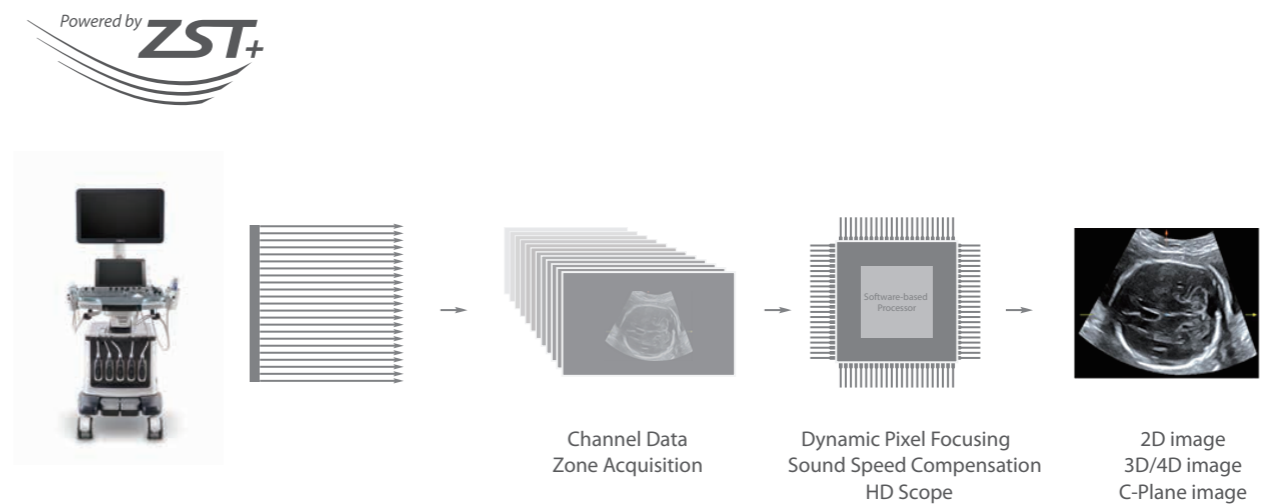


The structure of Zone Intelligence

# It rises.

With core platform advantages of ZST+

The channel data based ZST+ is an extraordinary innovation, representing an ultrasound evolution. Transforming ultrasound metrics from conventional beamforming to channel data based processing, ZST+ is more powerful and flexible to integrate the latest innovative OB/GYN imaging technologies, and to deliver a higher level of imaging performance in 2D, 3D/4D, and even the coronal plane image.



**As a result, you can have extraordinary confidence in your practice to:**

- Assess fetal condition from early stages
- Provide more accurate diagnosis on fetal CNS
- Deliver a higher level of image quality on the most difficult pregnant women
- Address a wide range of tough challenges in women's health

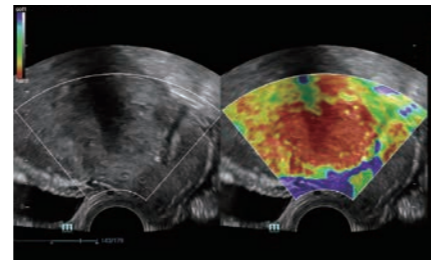


# It progresses.

Innovative clinical tools for confident diagnosis

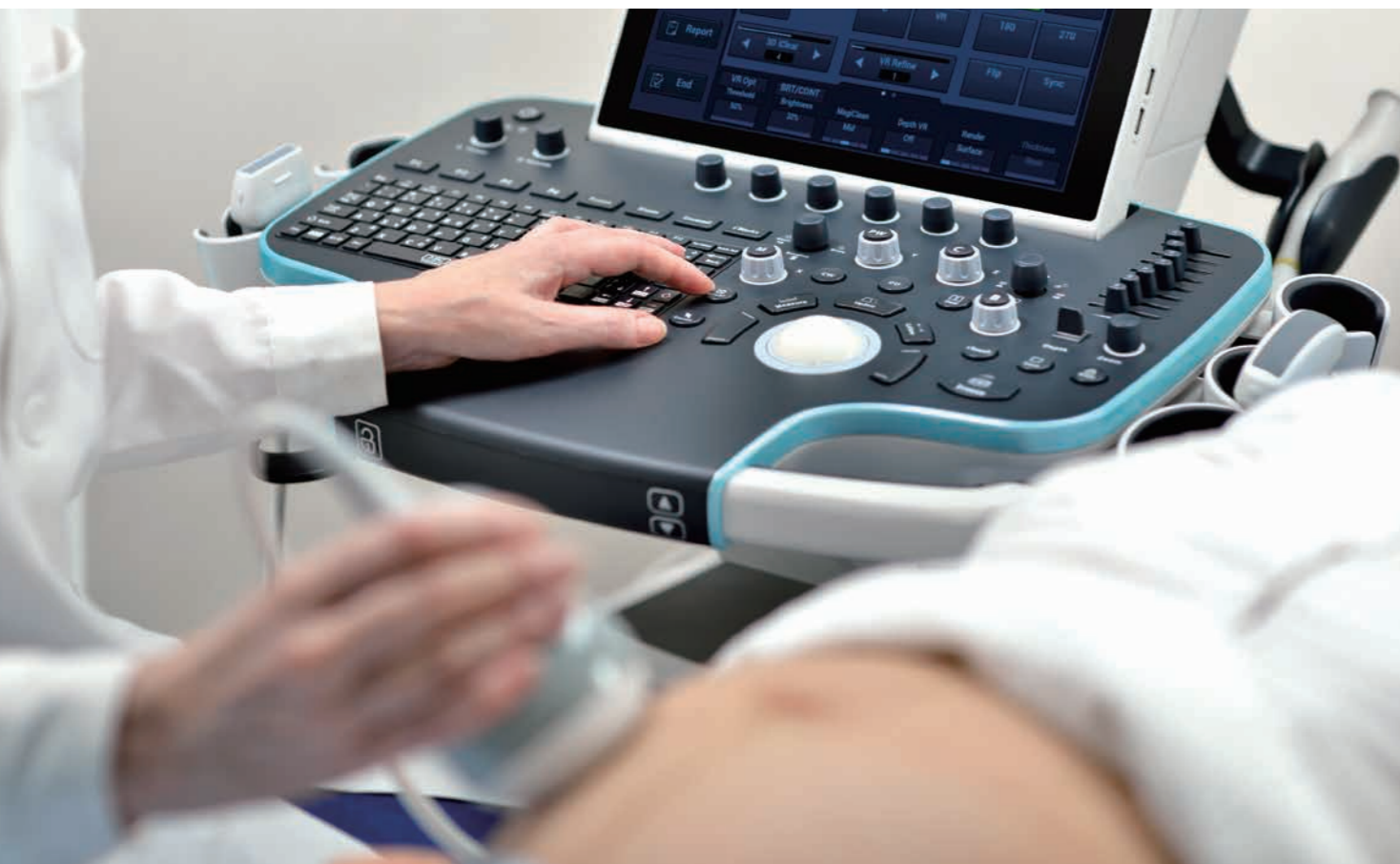
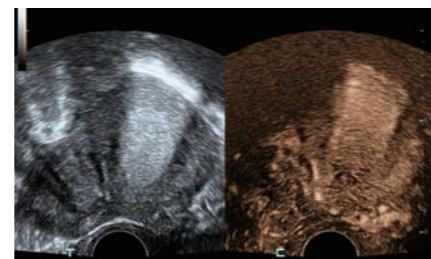
## Natural Touch Elastography

Natural touch Elastography provides multiple relative strain and stiffness parameters of breast, cervix, uterus and ovary lesion. With excellent sensitivity and stability, it provides further diagnostic information for more challenging demands.



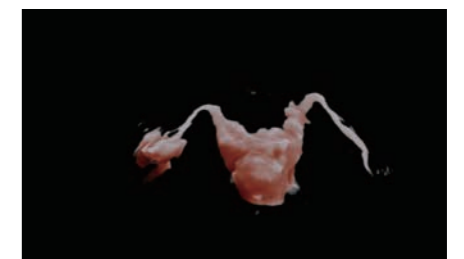
## UWN+ Contrast Imaging

UWN+ (Ultra-Wideband Non-linear Plus) CEUS enables the Resona Series to detect and utilize both 2<sup>nd</sup> harmonic and non-linear fundamental signals, generating significantly enhanced images, resulting in greater sensitivity and longer agent duration for better understanding of the GYN diseases.



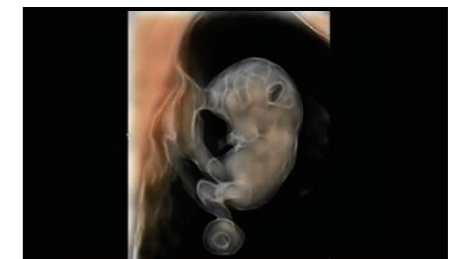
## 3D/4D Hycosy (HysterosalpingoContrast Sonography )

A simple and well-tolerated ultrasound procedure used to assess the patency of the fallopian tubes, as well as detect abnormalities of the uterus and endometrium.



## New iLive with Hyaline

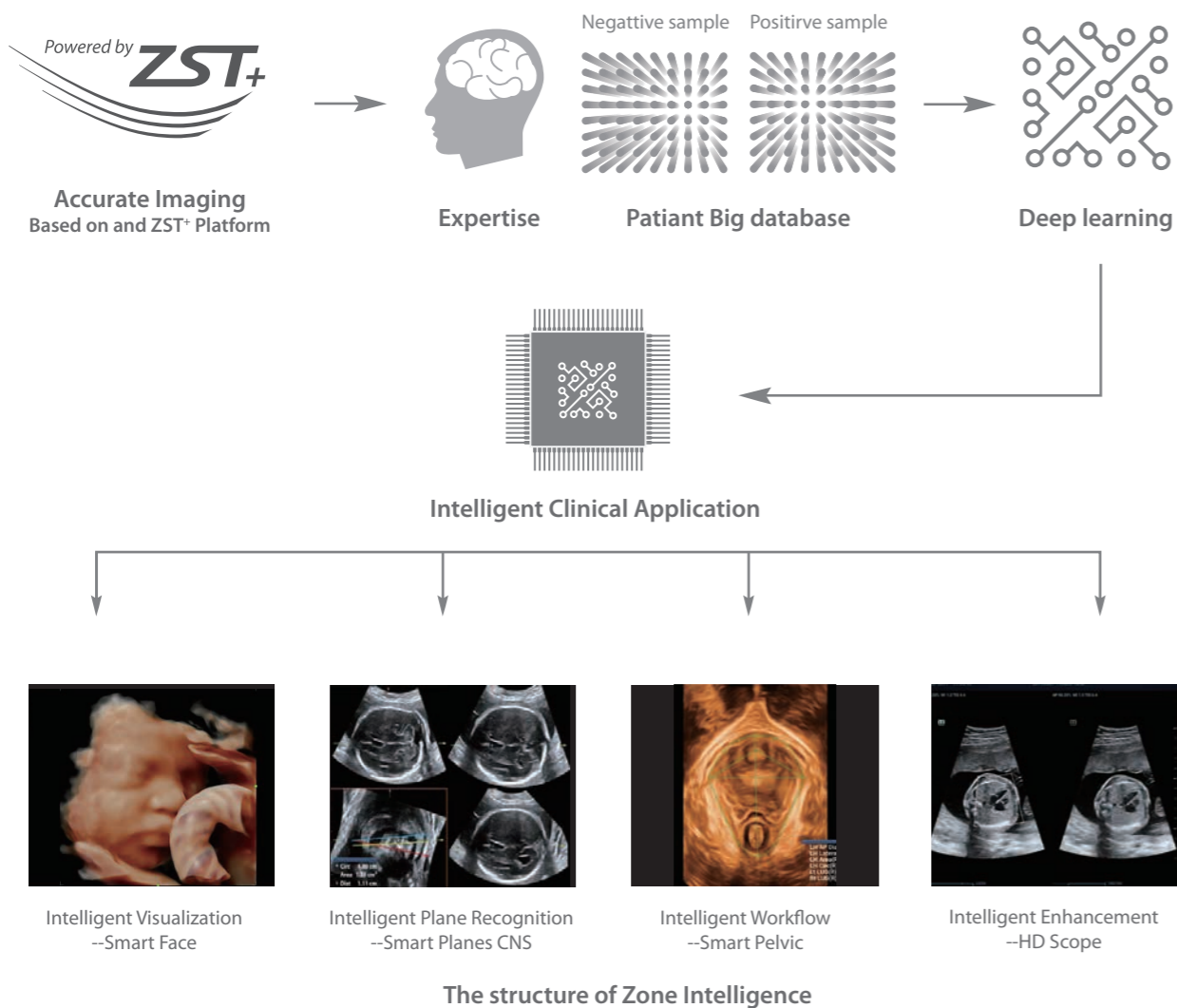
Comprehensive upgrading on iLive to significantly improve the detailed resolution as well as anatomical realism. Hyaline is a new rendering method that dynamically applies transparency to rendered structures for a more comprehensive view of anatomy, therefore better displaying internal anatomy from a solid surface.



# It leads.

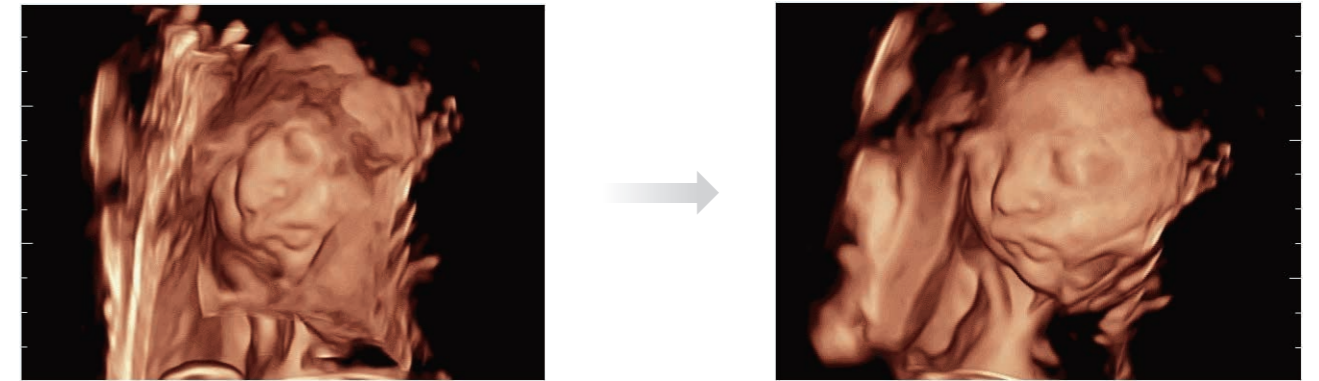
## Forwarding smart to clinical intelligence

Powered by the channel data based ZST+ platform, the new Resona series with Zone Intelligence builds up a truly smart mechanism to deliver a new level of intelligence. The core of Zone Intelligence is deep learning that is based on big data base and Ultrasound expertise. As a result, it is able to provide multiple intelligent retrospective processing, leading to efficient and effective image visualization, plane recognition, measurement, and image enhancement.



### Smart Face

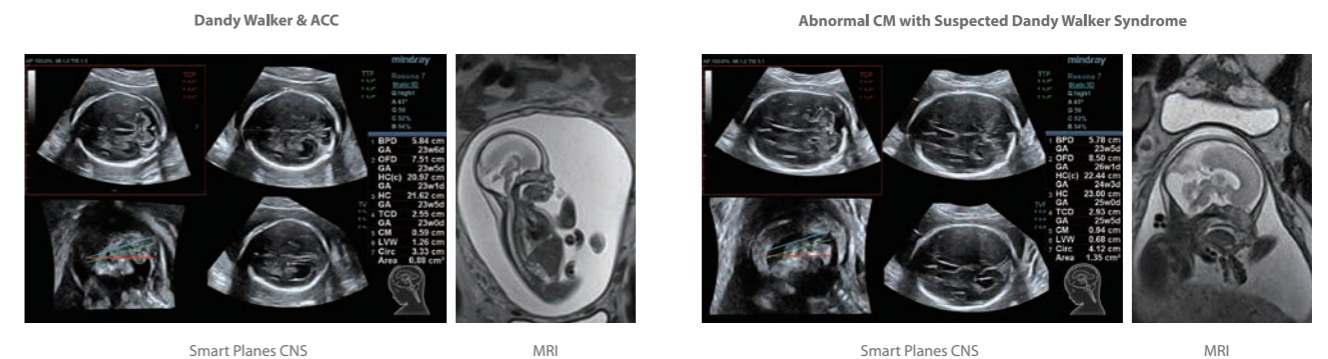
Acquiring an optimal view of the fetal face in 3DUS is cumbersome and time-consuming. In some cases, it is impossible to get rid of the occlusions such as cord, placenta, uterus, and extremities. The new Resona series with Zone Intelligence provides a fast and intelligent optimization for fetal face with simple one-touch operation. It can immediately remove occlusions in the volume data and eliminate unwanted noise information, and generate an optimal view of the fetal face with minimized effort.



### Smart Planes CNS

Mindray's exclusive pioneering technology to allow fully automatic and accurate detection of the most significant planes and frequently used measurements of fetal CNS, leading to intelligent diagnosis, improved throughput, and reduced user dependency.

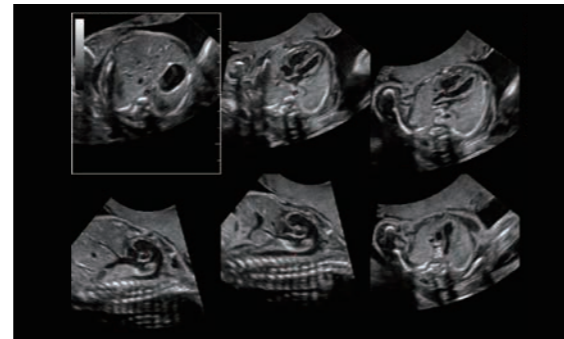
Smart Planes CNS provides a user-friendly tool that greatly improves scanning efficiency through increased accuracy coupled with automated operation. With a simple button click on a 3D fetal brain volume image, the standard CNS scanning planes (MSP, TCP, TTP and TVP) and a range of related anatomical measurements (BPD, HC, OFD, TCD, CM and LVW) are obtained immediately.





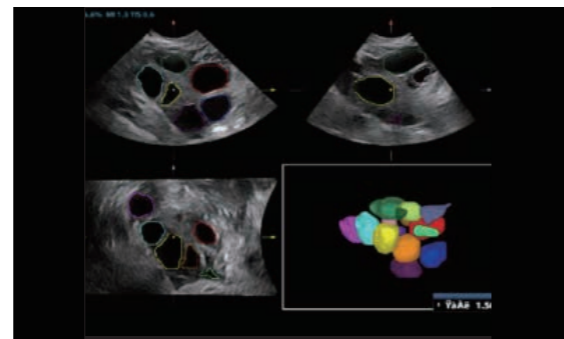
### Smart Planes FH

The new Resona series with Zone Intelligence has further extended the capability of Smart Planes for intelligent fetal heart diagnosis. With extremely simple user-interaction of defining one point, it allows fully automatic and accurate detection of the six most important fetal cardiac planes. In addition, it helps standardize the orientation of the fetal heart images, and therefore improving the efficiency and effectiveness of fetal heart diagnosis.



### Smart FLC

Smart FLC automatically detects the number of follicles and calculates each volume from a 3D ovarian volume image, assuring accurate assessment of follicles, essential for IVF exams.



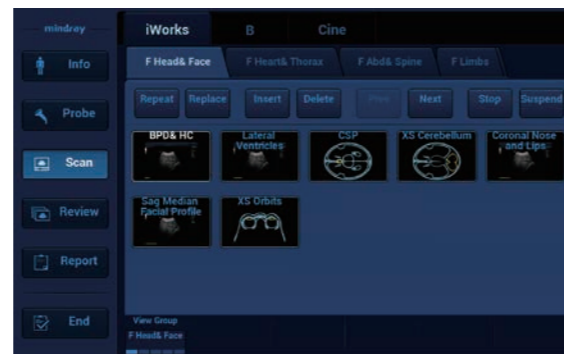
### Smart OB/NT

Automatic measurements of the most frequently examined parameters, including BPD, HC, FL, AC, OFD and even NT as early as 11 weeks, are available with a single click for higher productivity and reproducibility.



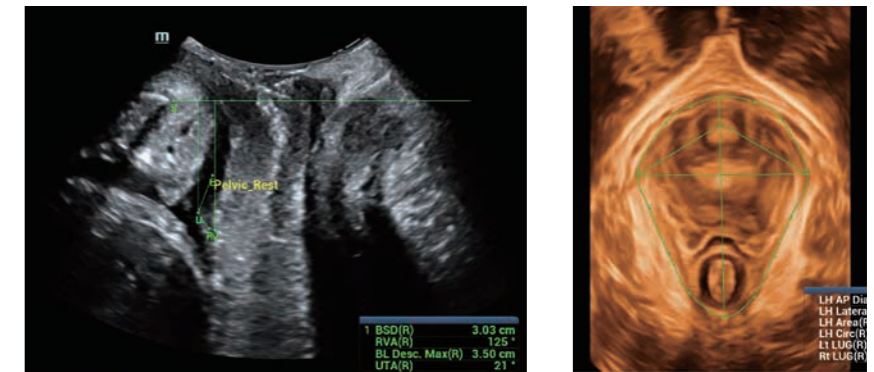
### iWorks

The flexible and customizable exam protocol tool helps to improve exam consistency and productivity by automating many repetitive actions, and to ensure exam completeness with user-friendly layout.



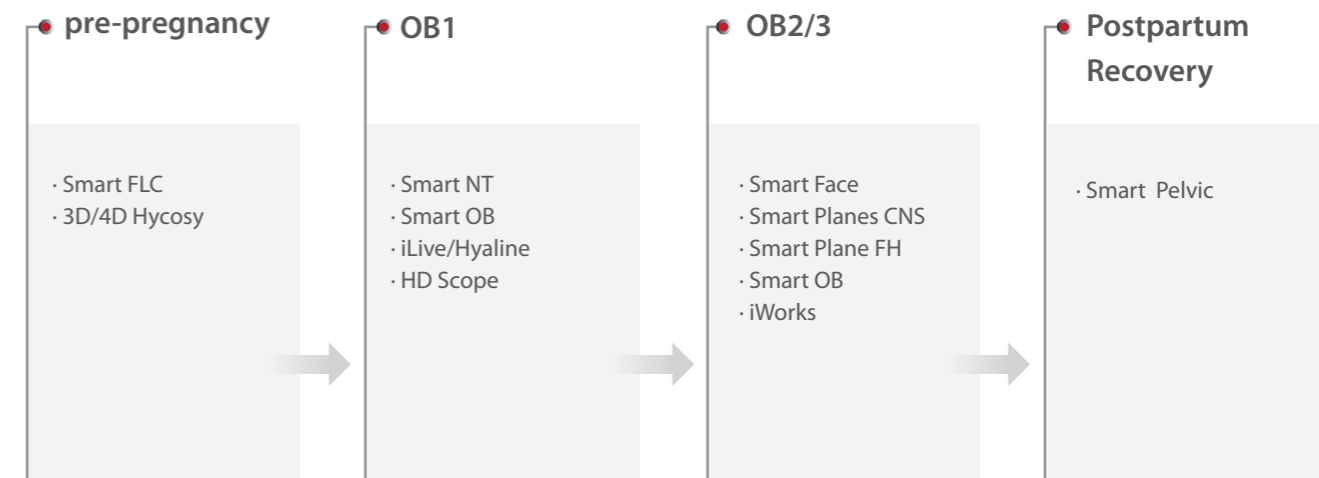
### Smart Pelvic

Realizing the increasing importance of ultrasound diagnosis on pelvic floor disorders, the new Resona Series with Zone Intelligence provides a new solution to greatly simplify the operation procedures, and to minimize the exam time for a standardized evaluation on pelvic floor. With extremely simple user-interaction, it generates a standard coordinate system and automatically provides all related measurements within a few seconds.



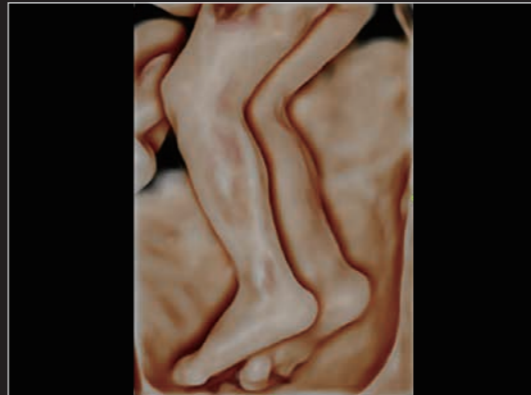
As a result, the new Resona series with Zone Intelligence provides an intelligent total solution to deliver truly exceptional women's healthcare from pre-pregnancy evaluation, to postpartum Recovery. Eventually, the Zone Intelligence will make ultrasound system as an intelligent partner to guarantee extraordinary confidence and enhanced efficiency in your daily diagnosis.

### Intelligent Total Solution for Womens Healthcare

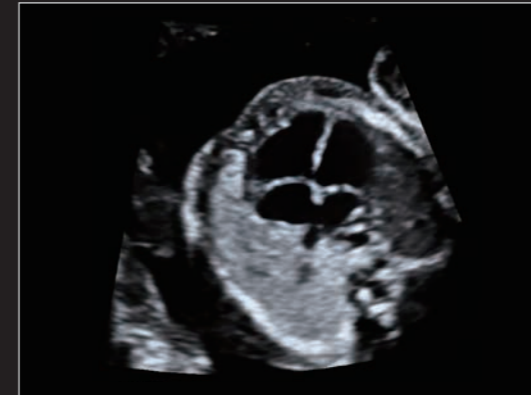




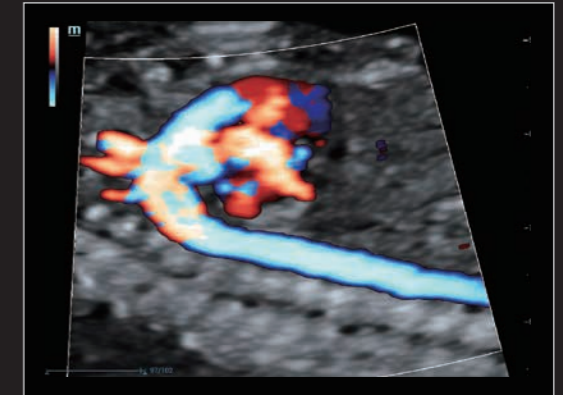
Excellent detailed resolution on a 9-week fetus with iLive



iLive with Hyaline—more vivid display on leg muscles



Excellent detailed and contrast resolution on fetal heart



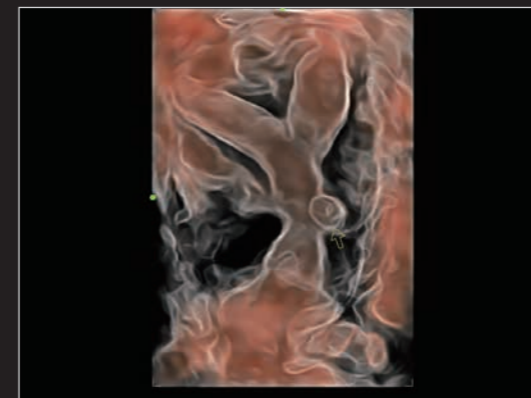
Excellent color profile with HR Flow on fetal aortic arch



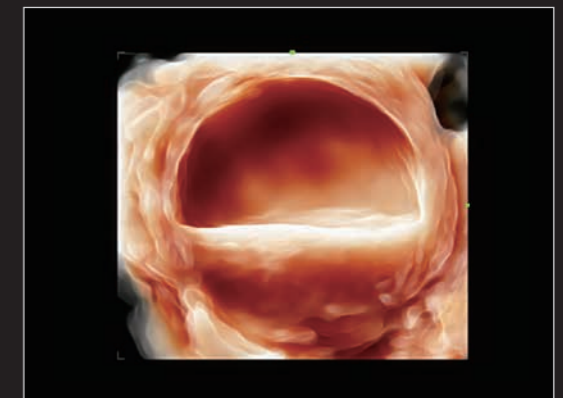
Cleft lip and palate on a 26-week fetus



A vivid fetal face with iLive



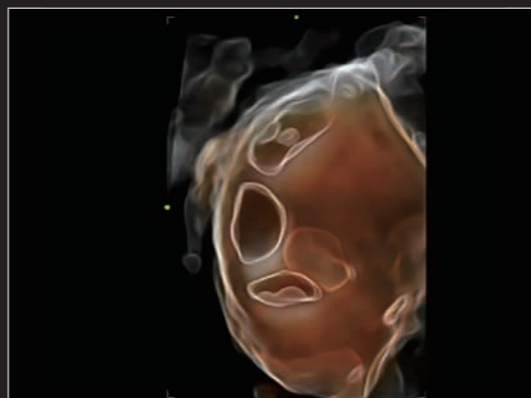
Uterine Diverticulum with Hyaline



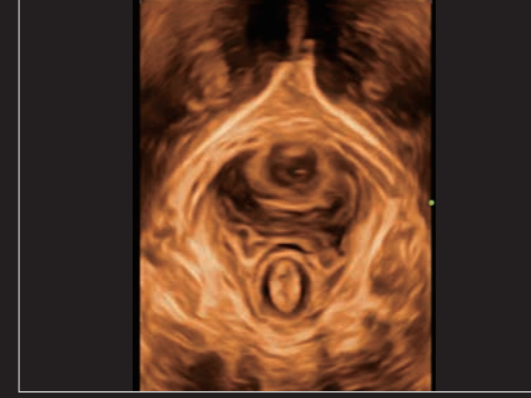
Ovarian chocolate cyst with iLive



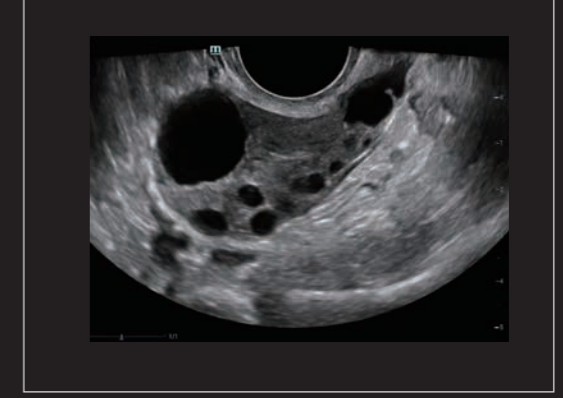
High definition 3D image of 15-week fetus with proboscis



Hyaline exposing the fifth embryo



3D reconstruction of levator hiatus



Excellent uniformity on ovary



Smart NT measurement



Butterfly sign with excellent definition

# It releases

## A new standard of image clarity

Better vision, deeper understanding. Based on the cutting-edge ZST+ platform, Resona Series redefines a new standard of image performance to meet the needs of the most challenging clinical practices.



# It senses.

## Ensuring a better user experience

The Resona series is designed around you. Gesture-based operation opens up a new trend in cart-based ultrasound with an agile, smart, and intuitive user experience beyond your expectations. Gel warmer's three level temperature and swiveling angle adjustment delivers great user comfort to ensure a pleasant exam experience. Inspired innovations drive a better user experience.



High resolution LED monitor with wide angle of view



Tilting multi-gesture touch screen



Three level temperature adjustable gel warmer



Pinless transducer with light indicator

### Dedicated Transducers for Women's Health:

- New generation convex volume transducer with light weight and compact design, providing a higher standard of image quality even on the most complex cases in women's health practice.
- Professional endocavity volume transducer with a wide angle of view, providing more comprehensive diagnostic information especially for pelvic floor evaluation.





# It resonates.

## With innovation, better diagnosis, and healthier life

Healthcare is, and remains, one of the most pressing challenges facing humanity across the globe. Technology, the core driver in many diverse industries, is transforming healthcare to a new level of resonance with unprecedented clinical precision, diagnostic confidence, patient safety and satisfaction. The same is true for ultrasound.

With more than 20 years' experience in ultrasound development, Mindray constantly endeavors to integrate the most advanced, reliable ultrasound technology to produce of amazing quality, for increasingly enhanced clinical confidence and patient care. Moreover, with the understanding of today's demanding and overburden hospital environment, the Resona Series delivers a leading edge premium ZST+ platform, transforming expertise to clinical intelligence for enhanced diagnostic efficiency and effectiveness. Medical minds think alike. By making ultrasound technology better, we are making lives better.