

SonoScape

Shared Service for Cardiovascular

Clear display of anatomical structures and hemodynamics and precise functional assessment are at the core of P60 series to enhance diagnosis evidence in cardiovascular imaging.

Expert Cardiovascular Probes

- Single crystal S1-5 has better penetration and S/N ratio, especially useful for scanning difficult patients
- High frequency 7P-A is dedicated for pediatric heart exams with extraordinary spatial and temporal resolution
- MPTEE and MPTEE mini probe are available for adult and pediatric transesophageal echocardiography exams
- Combination of high (12L-A, 12L-B) and low (9L-A) frequency covers vascular exams at different depth

SR Flow

- More easily filters out tissue signal and artifacts and reserves blood signal
- Higher blood sensitivity and realistic hemodynamics
- Easy detection of small vessels and slow flows

Auto C

- Automatic ROI box positioning and steering angle adjustment
- Easy optimization of color flow detection maximizes the efficiency for Doppler exams



Auto IMT

- Easy measurement of anterior and posterior intima-media thickness by drawing a ROI box
- Provides potentially more consistent results than measuring manually

AMM

- Up to 3 M-Mode lines can be set at any location and angle and activated simultaneously
- Easy M-Mode imaging for technically difficult position

Stress Echo

- Applicable for both exercise and pharmacologic protocols
- User-editable operation protocol to satisfy different clinical preference
- Professional myocardial scoring and reporting

*Sono-Assistant

- Customizable vascular scanning protocol helps streamline workflow while reducing keystrokes and exam time

Auto EF

- Automatic ejection fraction calculation based on left ventricular wall tracing and Simpson's rule
- Save time and efforts compared with manual measurement

TDI

- Uses myocardial Doppler frequency shifts to quantify myocardial tissue motion
- Pulsed and color Doppler are both available for clear visualization and informative analysis

*Myocardium Quantitative Analysis

- Precise ventricular wall motion detection with real-time sensitive tissue tracking
- Global and regional quantitative analysis including strain, strain rate, displacement, velocity, etc. on myocardial functions

Sono-Help

- Concrete cardiac tutorial covering all sorts of applications regarding probe position, anatomy illustration and standard ultrasound image examples

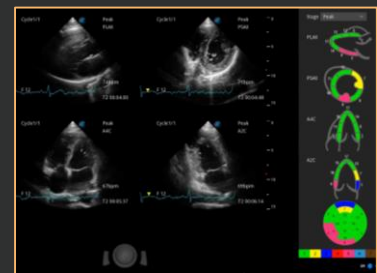
* Due to regulatory reasons and varying software version their future availability cannot be guaranteed.



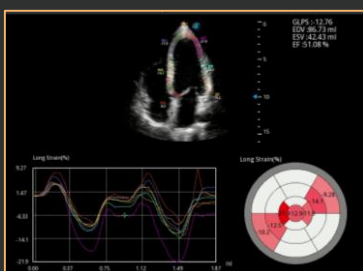
Hypertrophic Cardiomyopathy with S1-5



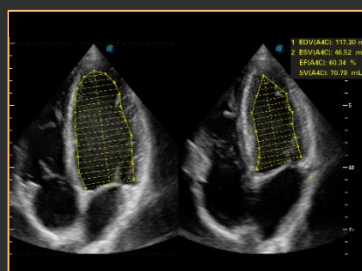
Aortic regurgitation with S1-5



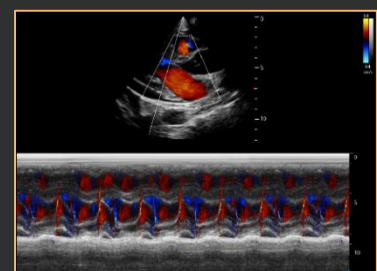
Stress Echo



MQA with Strain Analysis



Auto EF



Mitral Valve with Color M Mode