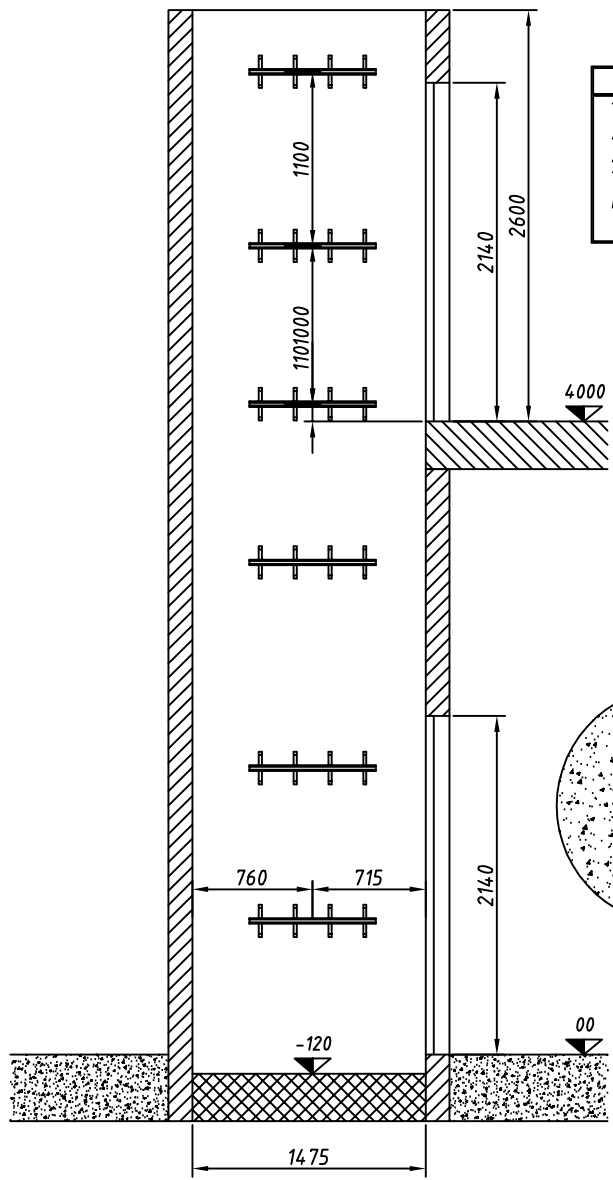


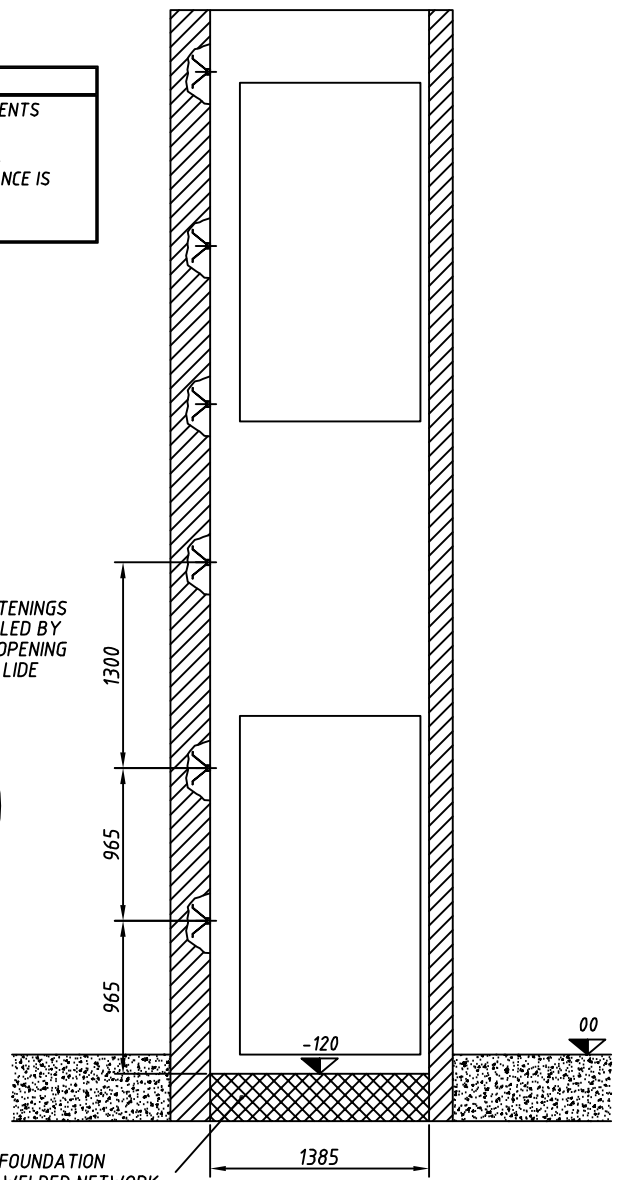
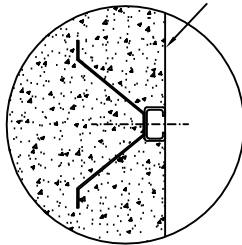
SEZ. A-A

SEZ. B-B

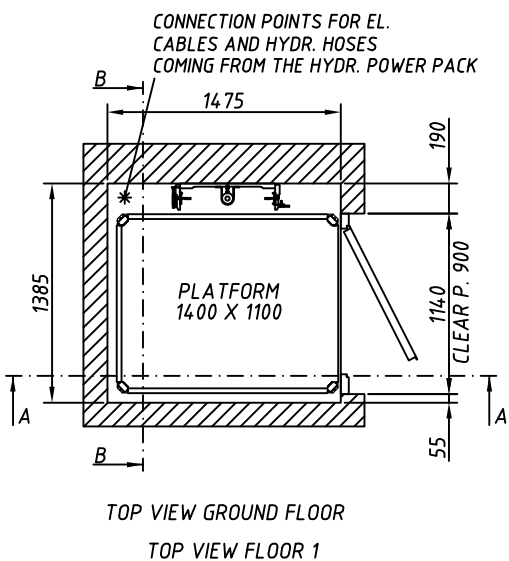


WARNING
 THE SHAFT MEASUREMENTS
 AND DOORS POSITION
 ARE VERY IMPORTANT.
 THE ADMITTED TOLERANCE IS
 IS 5 mm ONLY.

THE RAIL FASTENINGS
 MUST BE WALLED BY
 KEEPING THE OPENING
 ON THE WALL LIDE



CONCRETE FOUNDATION
 WITH ELECTRIC-WELDED NETWORK



ORDER : 146748
 CUSTOMER : ORTO PLUS LIFTS KACZMARCZYK HU
 FINAL USER :
 RIF. : -
 MODEL : E07

DATA RICEZIONE DISEGNO _____
 STAMP AND SIGNATURE FOR ACCEPTANCE

- BUILD WALL ENCLOSURE WITH INTERNAL FREE DIMENSIONS
 THE WALL MUST BE PERFECTLY IN SQUARE AND VERTICAL;
 THE DOOR OPENINGS TO BE ROUGH AND THE FINISHING AFTER THE DOORS INSTALLATION.
- THE RAIL FASTENINGS TO BE CAREFULL WALLED AT THE GIVEN DISTANCES
 AND PERFECTLY VERTICAL.
- THE REVEAL MUST BE LEFT UNFINISHED.
 THE FINISHING TO BE MADE AFTER HAVING WALLED THE DOORS.
- SET RACEWAYS $\phi 32$ mm. DIAM. FOR THE LOCK EL. CABLES.
 THEY MUST CONNECT DOOR FOOTING LOCK SIDE WITH HYDRAULIC HOSES AND
 EL. CABLES ASSEMBLY AREA.
- ATTENTION: BEFORE INSTALLING, CHECHE THE POSSIBILIT OF INSERTING THE CYLINDER
 IN THE WALLED TRAVEL OPENING..... CYLINDER= 2800 mm
- SHAFT DOOR TO BE BUILT SO AS THE WALLS ADJACENT TO THE PLATFORM
 HAVE NOT OUTRIGGERS AND REENTRANCES OVER 2 mm.
- POSITION TWO BEAMS AS INDICATED IN THE DRAWING
 CALCULATE THE KIND OF BEAM AND THE ANCORAGE AS PER THE
 ENCLOSED LOADING DIAGRAM