

**Relentless Innovation**  
for your diagnostic confidence

**SAMSUNG**



**V6**

Inspiring everyday efficiency



Product Inquiry

# Embracing efficiency in your daily ultrasound scanning

Begin your journey towards efficient healthcare with the Samsung V6 ultrasound system. Our robust solution for musculoskeletal offers both image clarity and advanced automated features. Additionally, Samsung's cutting-edge imaging engine, Crystal Architecture™ ensures a reliable ultrasound experience.

Experience simplicity with our easy-to-use system, specifically designed to alleviate your workload and enhance usability. Furthermore, our powerful system comes with battery capability, providing additional operational convenience. The Samsung V6 ultrasound system is a partner you can depend on to deliver exceptional efficiency to meet your daily ultrasound needs.



Intelligent diagnosis



Image Clarity



Easy to Use

Efficient Care



Versatility

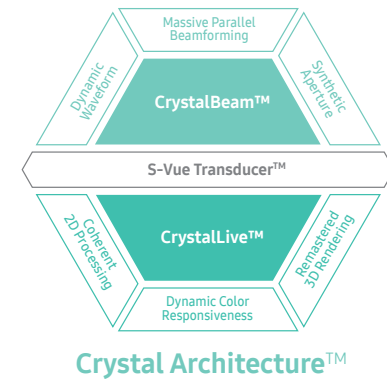


Accessibility



# Elevating confidence with superb imaging performance

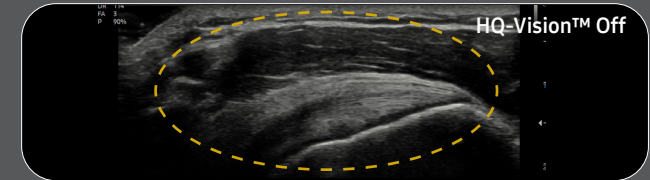
The V6 delivers exceptional 2D and color image quality tailored for MSK imaging, driven by Samsung's core imaging engine, Crystal Architecture™. With its comprehensive imaging capabilities, the V6 is designed to seamlessly support your daily ultrasound scanning needs, enabling clear and accurate image acquisition. Experience confidence and accuracy in ultrasound scanning with the V6.



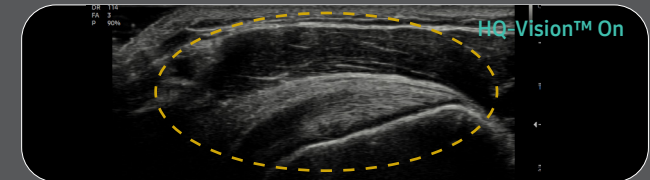
Elbow ganglion



1st interphalangeal joint

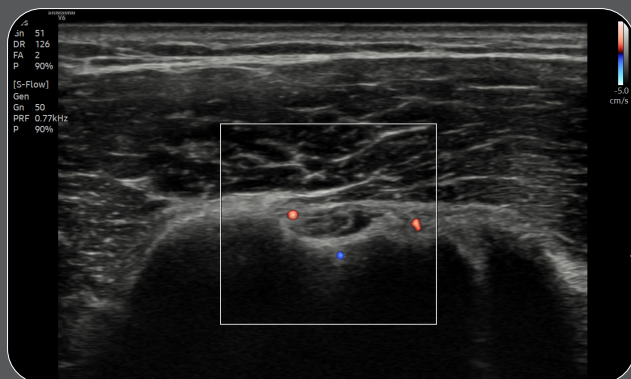


HQ-Vision™ Off

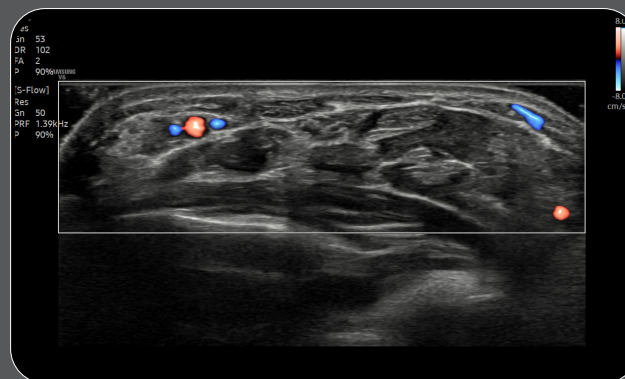


HQ-Vision™ On

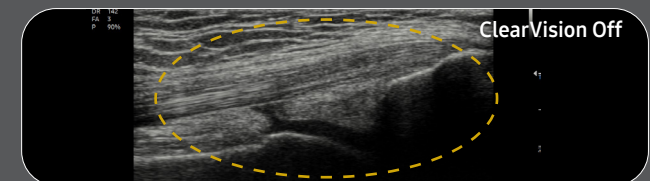
Supraspinatus tendon with HQ-Vision™<sup>1</sup>



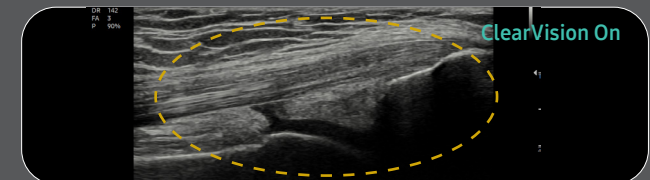
Circumflex humeral artery in S-Flow™ with LumiFlow™<sup>1</sup>



Volar aspect of the Wrist in S-Flow™ with LumiFlow™<sup>1</sup>



ClearVision Off



ClearVision On

Quadriceps tendon with ClearVision

<sup>1</sup>. Optional feature, additional purchase required.

# Reach new diagnostic confidence with comprehensive tools

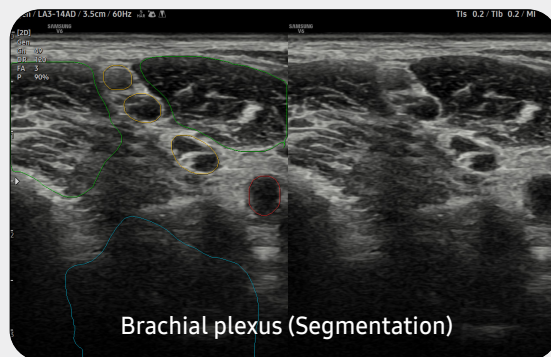
Enhance your daily ultrasound diagnosis with the V6, a versatile solution created to efficiently support your clinical demands in MSK. Benefit from our latest automation tools, which enable you to work with greater ease and achieve reliable results. Our aim is to assist you in prioritizing patient care, and the V6 stands as an excellent choice.

## Detect and track nerves with AI technology

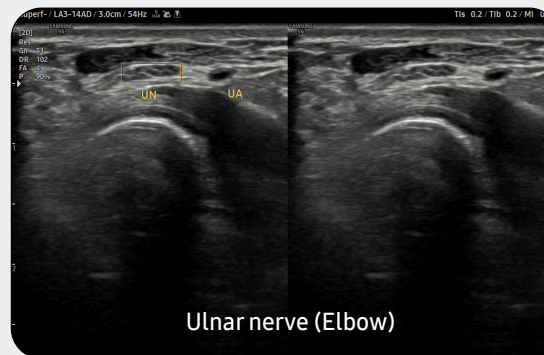
NerveTrack™<sup>1</sup>, a feature based on Deep Learning technology, detects and provides information of the location of the nerve area in real-time during ultrasound scanning.



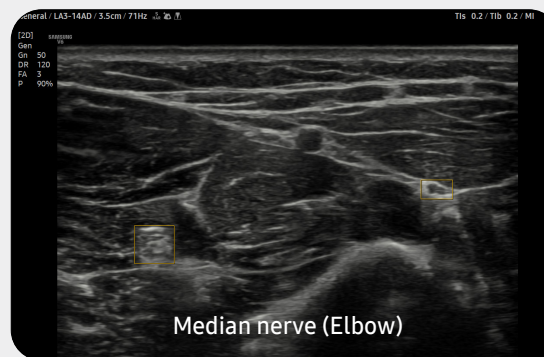
White paper



Brachial plexus (Segmentation)



Ulnar nerve (Elbow)



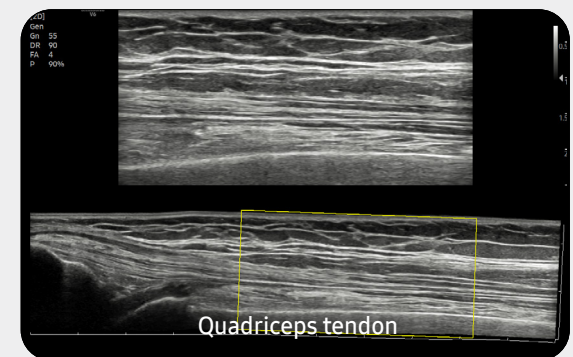
Median nerve (Elbow)

## Display needle tip clearly

With pinpoint precision, NeedleMate+™<sup>1</sup> delineates needle location when performing interventions such as nerve blocks. Improved accuracy and efficiency in procedure are possible with beam steering added to NeedleMate+™.

## Display in extended field-of-view

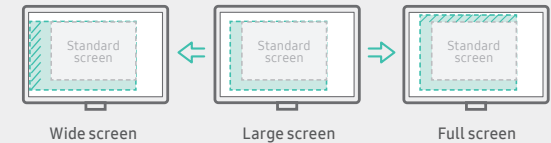
Panoramic+<sup>1</sup> imaging displays as an extended field-of-view so users can examine wide areas that do not fit into one image as a single image. Panoramic+ imaging also supports angular scanning from linear transducer data acquisition.



Quadriceps tendon

# Optimize workflow with precious time-saving tools

V6 is specifically designed to optimize the work efficiency of healthcare professionals. Notably through its remote accessibility, streamlined workflows, wider screen view for enhanced user experience, and its compact yet powerful design with battery capability, making it adaptable for diverse medical environments.

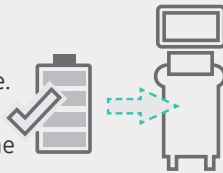


## See images in expanded view

The ultrasound examination can be performed while viewing the images and cines that are expanded at various ratios according to the user preference.

## Continue working even when AC power is temporarily unavailable

**BatteryAssist™**<sup>1</sup> provides battery power to the system, enabling users to perform scans when AC power is temporarily unavailable. It also allows the system to be moved without having to turn the power off and then back on.



\* The live scan time without AC power is about 3 times longer than the live scan time of the previous model, HS60.

## Build predefined protocols to ensure every step is followed every time

**EzExam+™**<sup>1</sup> enables you to build or use a predefined protocol, and assign protocols for examinations that are regularly performed in the hospital in order to reduce the number of steps that you have to go through.



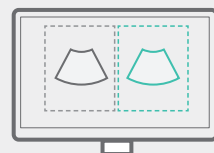
## Customize frequently used functions on the touchscreen

**TouchEdit**, a customizable touchscreen, allows the user to move frequently used functions to the first page.



## Compare previous and current exam in a side-by-side display

**EzCompare™** automatically matches the image settings, annotations, and bodymarkers from the prior study.



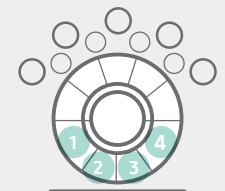
## Select transducer and preset combinations in one click

**QuickPreset** allows the user to select the most common transducer and preset combinations in one click.



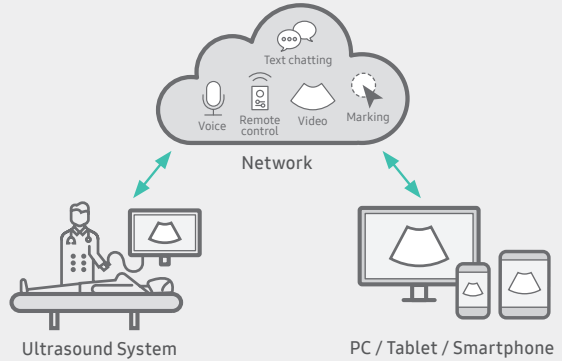
## Assign functions to the buttons near the trackball

The buttons around the trackball can be customized for easy selection of commonly used functions.



### Save image data directly to USB memory

User can directly export image/cine with a USB device.



### Real-time image sharing solution

SonoSync™ 1,2 is available in PC and smartphone, etc. as a real-time image share solution that allows communication for care guide and training between doctors and sonographers. In addition, voice chatting, text chatting and real-time marking functions are provided for better communication; and the MultiVue function is included that allows monitoring multiple ultrasound images on a single screen.



Learn more

### Samsung healthcare cybersecurity

To address the emerging need for cybersecurity, Samsung provides a solution to support our customers by offering the tools to protect against cyberthreats that may compromise invaluable patient data and ultimately degrade the quality of care.



Learn more



Intrusion prevention



Access control



Data protection



### Effective cooling system

An effective airflow system cools down the ultrasound system by constantly letting heat out and reducing fan noise.



### Recycled materials

Eco-conscious resin cover is applied to the air vent exterior cover.

### Eco Packaging

Eco-conscious recycled paper is included in the product packaging.



Learn more

1. Optional feature, additional purchase required.

# Comprehensive selection of transducers

## Linear array transducers



Abdomen, Pediatric,  
Musculoskeletal, Vascular,  
Small parts



Abdomen, Pediatric,  
Musculoskeletal, Vascular,  
Small parts



Musculoskeletal, Pediatric,  
Vascular, Small parts



Musculoskeletal,  
Intraoperative

### \* Ergonomic transducers

The new endocavity transducer supports natural grip by moving the max-width point to a more forward position and also increasing the length of the grip to allow balanced weight distribution.



Cleaning and  
disinfection guide

## Curved array transducers



Abdomen, Obstetrics,  
Gynecology, Pediatric,  
Musculoskeletal, Vascular,  
Urology



Abdomen, Obstetrics,  
Gynecology, Pediatric,  
Musculoskeletal, Vascular,  
Urology, Thoracic



Abdomen, Obstetrics,  
Gynecology, Pediatric,  
Musculoskeletal, Vascular,  
Urology, Thoracic



Abdomen, Pediatric,  
Vascular

### About Samsung Medison CO., LTD.

Samsung Medison, an affiliate of Samsung Electronics, is a global medical company founded in 1985. With a mission to bring health and well-being to people's lives, the company manufactures diagnostic ultrasound systems around the world across various medical fields. Samsung Medison has commercialized the Live 3D technology in 2001 and since being part of Samsung Electronics in 2011, it is integrating IT, image processing, semiconductor and communication technologies into ultrasound devices for efficient and confident diagnosis.

\* This product, features, options, and transducers may not be commercially available in some countries.

\* Sales and Shipments are effective only after the approval by the regulatory affairs.  
Please contact your local sales representative for further details.

\* This product is a medical device, please read the user manual carefully before use.

\* S-Vue Transducer™ is the name of Samsung's advanced transducer technology.

1. Optional feature, additional purchase required.

2. SonoSync™ is an image sharing solution.

### SAMSUNG MEDISON CO., LTD.

© 2023 Samsung Medison All Rights Reserved.

Samsung Medison reserves the right to modify the design, packaging, specifications, and features shown herein, without prior notice or obligation.

CE 0123

CT-V6 V1.04-MSK-JWP-230728-EN